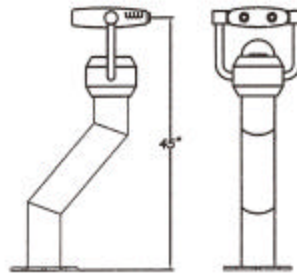
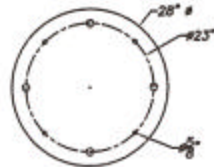
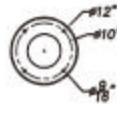


HI-SPY
STANDARD MODEL



HI-SPY ADA
WHEELCHAIR
MODEL



NOTES:
A) MACHINE CAN BE LAG BOLTED DIRECTLY INTO WOOD
B) IF INSTALLED IN CONCRETE, FIRST MARK THE FOUR HOLES, THEN DRILL USING A 3/4" DRILL BIT, FOUR HOLES FOR LAG SHIELDS. INSERT LAG SHIELDS, FASTEN LAG BOLTS THROUGH MACHINE INTO LAG SHIELDS

INSTALLATION DETAIL
JUNE 2010

PINNACLE SCOPES
COBOURG ONT.
rod@pinnaclescopes.com

SIZE	FIG. NO.	DWG. NO.	REV.
SCALE			SHEET